

### **BACKGROUND:**

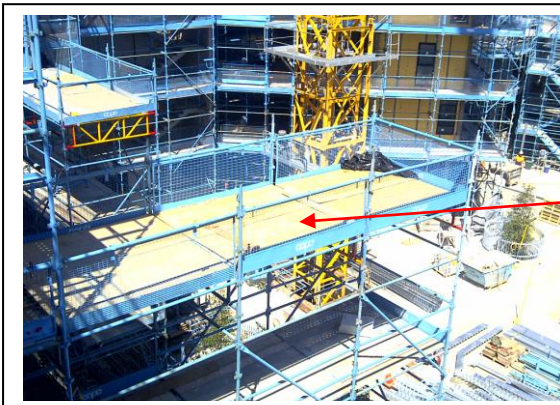
A scaffold on a construction site has been over loaded to such an extent that it was close to collapse. A medium duty scaffold with a rating of 450kg per bay was overloaded by nearly 650kg bending lower sections of the scaffold standards, and as a result, almost causing the scaffold to collapse.

### **RECOMMENDATIONS:**

- Ensure that all scaffolds are designed and erected by competent persons.
- Ensure that all personnel using the scaffolding are aware of the maximum loading as per the design.
- Ensure that scaffolds that incorporate loading bays have the required signage indicating the W.L.L. of the loading bay and are approved by competent persons.
- Ensure that scaffolding working decks are not used for the storage of heavy materials i.e: tiles, cement etc, unless allowances are made in the design of the scaffold and adequate access and egress is maintained.
- All scaffolding above 4m is inspected and tagged every 30 days.

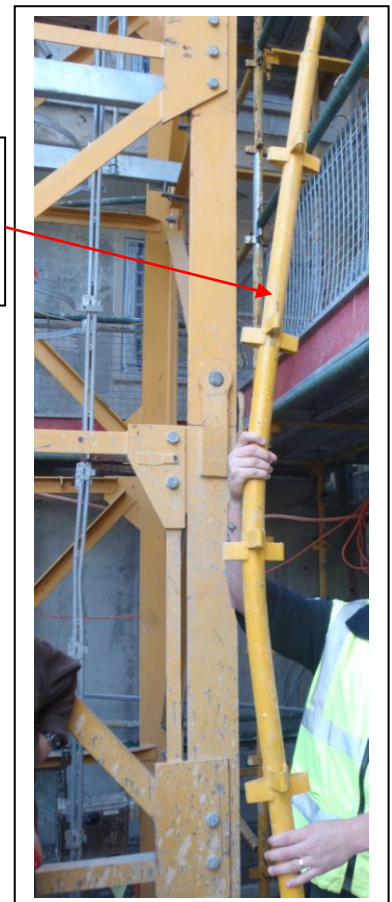


Bent scaffold standards as a result of overloading



Scaffold loading bay

Ply deck of loading bay to avoid point loading of planks



**SAFETY ALERT**

For further information contact Steve McCann:  
Mob: 0488 102 297  
Email: smccann@cfmeuwa.com